

# Career Lattice

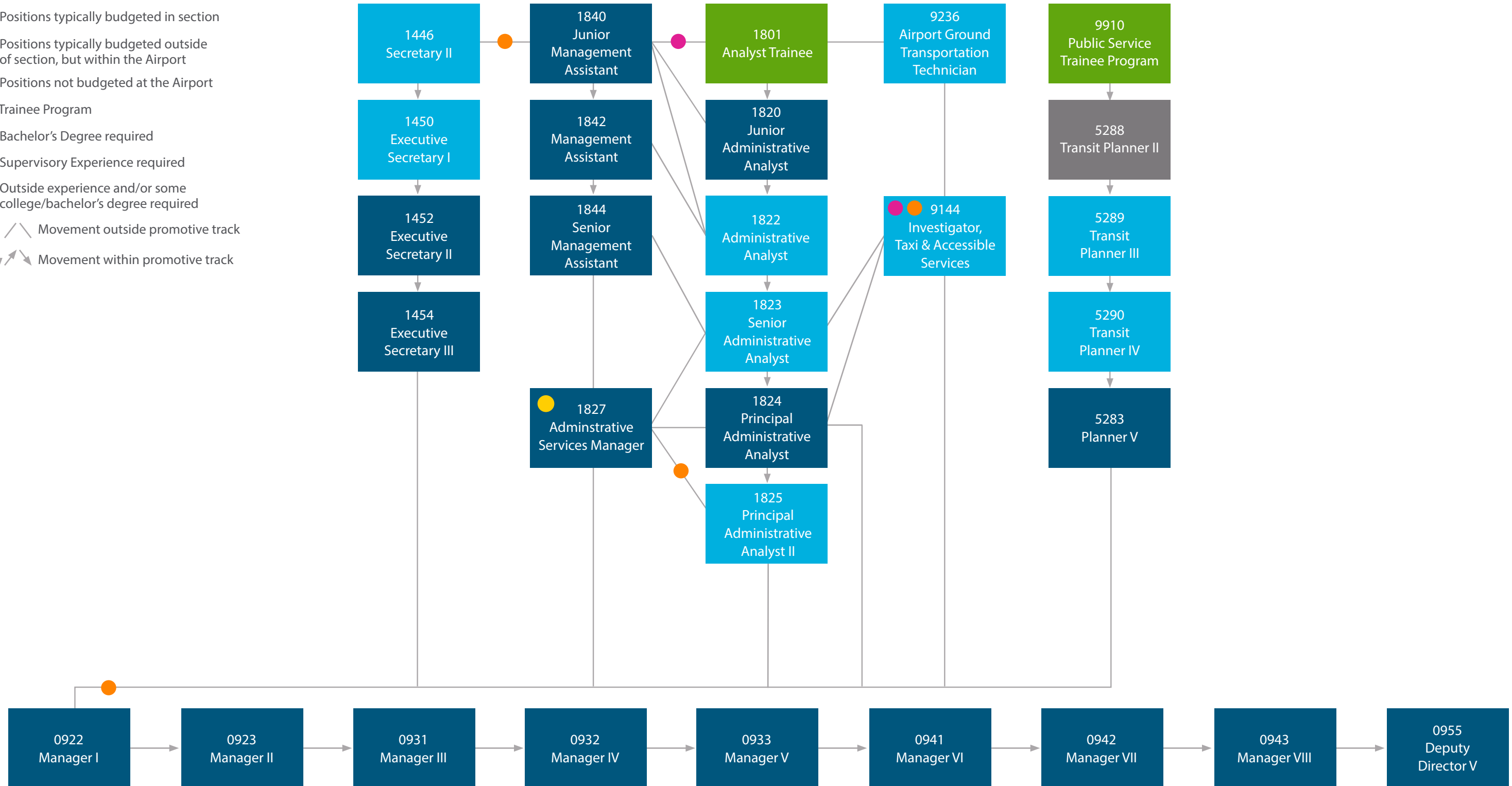
## AIRPORT SERVICES

This Career Lattice is designed to show a career progression pathway that allows for vertical, horizontal, and diagonal movement within SFO, and other departments within the City & County of San Francisco. It is intended to strictly provide guidance and does not guarantee promotive or lateral opportunities.

Note: Position descriptions, minimum qualifications, and availability, are subject to change based on departmental budget, operational need, and Civil Service rules.



- Positions typically budgeted in section
- Positions typically budgeted outside of section, but within the Airport
- Positions not budgeted at the Airport
- Trainee Program
- Bachelor's Degree required
- Supervisory Experience required
- Outside experience and/or some college/bachelor's degree required
- | / \ Movement outside promotive track
- ↓ ↘ ↙ Movement within promotive track



0922 is the entry level to the management series. Depending on the positions, some opportunities in this series require supervisory or managerial experience.